

MANX MODEL BOAT CLUB

NEWSLETTER

August 2020

Hi All,

It's been quite a while since our last boat club newsletter (mainly as a result of the disruption caused by the Corona virus situation) but now that life has virtually returned to normal on the Isle of Man we need to bring you up to date with a few items as we run through the remaining part of the summer season.

Sunday sailing at Silverdale has been very popular since the easing of the lockdown restrictions with a good number of club members participating with free sailing and a general 'chit chat' with fellow club members. As we don't want to cause too much disruption to our Sunday mornings routine, the committee felt that we should only hold a limit the number of organised events for the rest of the summer rather than try to 'squeeze' everything in to a couple of months. We have therefore proposed a small number of events which you can find further details below.

As we don't have any event reports to include with this newsletter, I have decided to share details of some of the modelling activities which members been up to during the lockdown period which they have been kind enough to provide.

As always, you can find updated information about the boat club on the club website www.manxmodelboatclub.org, and if you would like to include any contributions for future newsletters then please send them through to me.

Happy Sailing,

Jason Quayle

Blackpool Show

Although the organisers of the Blackpool show are still advertising the event as going ahead, the committee felt that it would be very difficult for the club to attend this year due to the travel restrictions and quarantine periods which are currently in place. We have therefore decided it would be better if we don't attend as a club, however members are still free to travel to the show as individuals if desired (adhering to Government travel guidelines).

2020 Fixture List

Sunday 23 rd August or Sunday 30 th August if wet.	On the Water Scale Competition	To be held at Silverdale starting at 10am.
Saturday 19 th September (or Sunday 20 th if wet)	Onchan Commissioners Shield & Venetian Evening	To be held at Onchan Park starting at 6:30pm.
Sunday 4th October	Vintage Yachts	To be held at Ramsey Mooragh starting at 2pm.
Date to be confirmed	Spithead Review for Naval Vessels	Venue and time to be confirmed.
Saturday 14 th November	Annual Dinner	Port St Mary Golf Pavilion starting at 7pm.
Wednesday 25 th November	Annual General Meeting.	To be held at the Archibald Knox in Onchan starting at 7:30pm.
Sailing will continue throughout the winter season at Silverdale Glen Lake on Sunday mornings starting at 10am through until midday.		

The first of the events on our re-arranged calendar is an 'On the Water' scale competition at Silverdale on Sunday 23rd August (or Sunday 30th August if wet). This will be a mass participation event with everybody sailing at the same time and our regular judge Shirby Leece will be marking the boats as they sail past. There will be classes for under 1m and over 1m boats and an additional class this year for boats with a Manx connection. Members are free to enter more than one model, but must inform the judge when removing one boat in order to launch another.

The Venetian Evening event will follow a similar pattern to previous years with static judging on the side of the pool for the Onchan Commissioners Shield and then judging on the water of the boats lit up for the lighthouse trophy. Due to the parking restrictions around Onchan Park we may set up on the opposite side of the pool to normal near to the car park.

Obituary

As you will have seen from the e-mails I have sent out over the last few weeks, a couple of former club members Mike Dove and Michael Leece (Popey) have recently passed away. Both were long time supporters of the club and were attending events up until a few years ago. Both will be sadly missed.

Unfortunately I don't have any pictures of them actually at events (most of my pictures are of models rather than members), but the photo below does show them attending the club AGM in 2010.

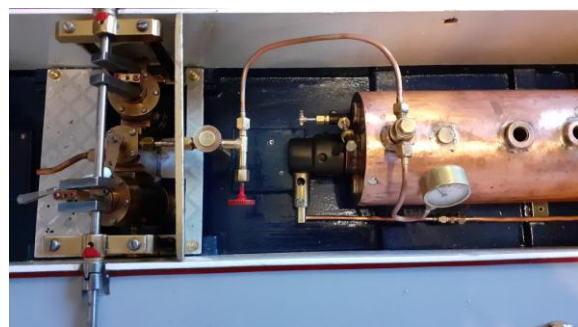


Members Activities During Lockdown

The period of lockdown was quite difficult for some people, however for others it was just the opportunity they were looking for to build that model which has been 'sitting on the shelf' for a few years. The following is a brief look at some of those projects.

Starting with myself, I have been working on two models:- I purchased the steam boat 'Pilat' at Norman Cadwalladers sale back in December and I have been slowly working on the engine and boiler to get it ready for a pressure test. The link below will take you to a brief video of the engine running on compressed air, and the photos show the engine & boiler.

<https://www.youtube.com/watch?v=9nytfxZR7Vs>



Keeping with a steam theme, I have also been continuing to build John Williams steam launch 'Topaz'. Hopefully this will make an appearance at club events next year.



Bill Callow has been busy completing his Shannon class lifeboat fitted with jet drive propulsion. It can now be seen sailing regularly at Silverdale on Sunday mornings. The link below will take you to a You Tube video of Bills boat sailing at Silverdale.



<https://www.youtube.com/watch?v=4cHDx-sXtqs>

On a similar theme, Brian King has now finished his 'Sir William Hillary' lifeboat (ex Douglas lifeboat) and has been seen sailing it on a number of occasions.



Sticking with 'themes' we now move on to a couple of 'Puffers'. Both Mike Kelly and John Hancox have been busy completing their Clyde Puffers. John's is all the more remarkable by being scratch built from paper and card.



John has actually had a production line running during lockdown with two other models - his Manx Independent tug boat which is now sailing and his North Barrule which is partially completed (all made from paper & card plus 2 lumps of coal)!



Talking of Tug Boats we have Dave Costain with his Alexander tug boat.



Dave has also been sailing his small tug boat which he bought at Normans Sale, but for some reason it thinks it is a submarine!

Now we come on to our 'overseas' members. The first report is from Gareth & Elizabeth Jones.

"Hi everyone,

This is the third attempt to send this email. Hopefully I have finally got this stupid software to change the file sizes of the photos to the intended value.

I tried to send this yesterday but it was rejected for some of the recipients due to the file sizes being too large for their mailboxes. I realised that some of the photo files had not been reduced in size so I sent a second attempt this morning but one of the photos had still not reduced in size as I thought.

For everyone's entertainment and interest in these strange times here is a report on model building in East Yorkshire over the last 6 months or so.

Elizabeth is working on Castaway, a semi scale model of an International Dragon. This is based on a hull she looked at on the CADMA show bring and buy stand 2 years ago. She originally dismissed it and it was bought by Alan Spicer, a member of the Hull Castaways club. He said he only bought it for the propshaft and motor it had at the time, and passed the hull on to Elizabeth to complete as a 'proper' yacht.

Muppet was acquired as a swap for a vane gear. Elizabeth completed a 10 Rater restoration for Michael Cresswell from Derby about 3 years ago. He wanted to fit a vane gear to it and we advised him to look out for one on Ebay. Last year he said he had bought one, could we fit it. In practice he had bought a 36R Lancet yacht with an unsuitable moving carriage vane gear, too small for a 10 Rater. We agreed to swap a vane gear we had which was suitable for his yacht, for the one on his 36R and he gave us the hull as well. Elizabeth has just started cleaning up the hull.

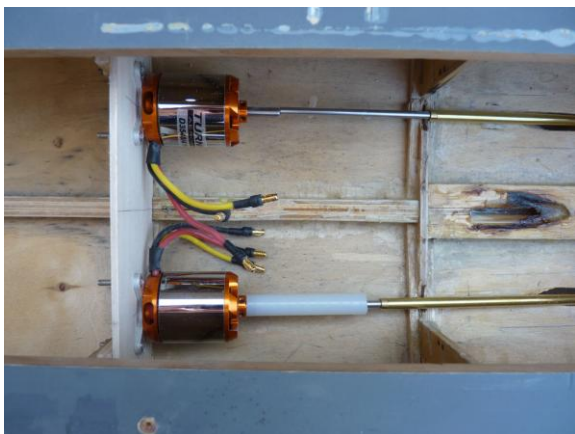
I am carrying out a major refurbishment of my ancient ELCO PT boat. It is getting a brushless conversion and hopefully much enhanced detailing with some 3D printed parts. The old and new motors are shown for comparison. I have made a prototype motor mount and I am currently aligning the propshafts prior to the nerve racking job of committing to aralditing them in. The original propshafts had full length tubes but the upgrade will have exposed shafts with homemade P brackets, more representative of the original boats.

We have also refurbished a Marblehead yacht named Iris that we bought from Brian King. It was originally Braine steered, which we have retained but I have built an alternative 'radio hatch' fitted with a sail winch and rudder servo than can be substituted when free sailing is not possible.

We hope everyone is keeping well and safe. So far we are both fine, although I have had some sad news over the last few days that a couple of my retired work colleagues have both passed away with Covid 19. We only go out once a day to take our current Hearing Dog, William for a walk. Our younger son is keeping us supplied with food and other essentials. We hope to see some of you at Blackpool in October, if not before. However, I am not convinced a hall full of old duffers is going to be permitted even then, but we will just have to see.

Best wishes and stay safe

Gareth and Elizabeth”



Paul Brassington has send me a number of e-mail reports during lockdown – not all to do with model boats, but included here for members interest. There is also a link to a short video showing Pauls Commodores Challenge fleet. (Incidentally, we will be carrying the Commodores Challenge over to next year, but I have included details at the end of this newsletter for those still looking to build an entry).

“With my tongue in cheek -

The Isle of Man Steam Packet have just emailed me that they are taking bookings for the T.T. 2021 so when you have a committee meeting let me know when your 2021 weekend is to be.

Has Bob any more ideas?

Trust you all are well now you can enjoy your weekends at Silverdale, (10 members.) Not shown my face at the pool side but found jobs to do around the house.

Used the car once - only about 10miles round trip.

Sitting here inside it sounds as though it could be a rough crossing.

All the best to everyone.

Paul and Mary.”

“Hi Jason,

Don't feel too sorry for me because I have put Model boats on hold for the moment.

I was already organised with old engine oil for the garden fences , back and front. Had some white gloss paint for garage doors and the front door plus porch, power washed the patios and drive, fixed the house alarm - I could go on but it was a pleasure to take our time doing the jobs you don't usually look forward to.

Today had a phone call from the lads at Buxton saying they hope to sail a week on Sunday giving the usual distancing etc.

I don't know if you know but I do 10 miles most days on my push bike first thing in the morning before it gets hot. There is a lot less traffic which makes it very pleasant.

At the moment Mary is watering the garden which we have done most evenings during this dry weather, I think last year when we came back from the Isle of Man most of the plants had given up.”



“Hi Jason,

Pleased you are virus free and you can live a more normal life, keep these foreigners out until it is safe. I think New Zealand have managed to get it back in by being soft.

Will be with you all in spirit if not in person, especially the next couple of weeks, we usually book into the Shore for tomorrow evening and look forward to doing all the things we have planned for the last few months.

I don t suppose we will see anybody for a while, I assume Blackpool is out?

So here s to next year and trust it all works out.

Paul and Mary.”

<https://youtu.be/yebnNS4cZYY>

Kim Holland has been working on a number of projects as described below;

“First up is HMS SNAKE, Caldercraft kit that’s been on the shelf for 16 years.



This is a Yacht Barge, full size is about 35 foot.

Building it for Richard Chesney AMBO to proof his new plans before they go on sale. Scale is 1/12 so nice and big, about the same size as the thames barges at 1/24.



This is a Manx 48inch 1930's yacht, free sailing, from the great Late Roy Watterson, just getting around to repainting after stripping and repairs to hull and old glue. Will sail it with a simple RC unit when complete. The large slot down the middle is where the keel slips up through and is attached on deck by two sliding nails through holes.



A fleet of mini pusher tugs/logging boats all cloned from the wooden original. Hope to be able to add these to the Av-a-Go stable of boats.



And doing some stuff about the house, and the allotment too.”

Jason Fleming has provided some photos of an amphibious car which Andreas father Dave Sherwood has built. Hopefully we will see this model at Mannanan next year.



Finally we come to John Williams who brought his most recent model to Silverdale for everybody to admire. It's not actually a boat, but it is a fully functioning RC forklift truck complete with working hydraulic system.



Thank you to everybody who sent in contributions during lockdown, and don't forget you can send information about projects on the go at any time to be included in the newsletter.

Give Away

Brian Swinden has a motor tug boat available for anybody who wants it. ABS plastic hull with timber superstructure, fitted with motor, prop shafts, propellers and rudder. It needs a battery and radio gear fitting. This is a give-away free of charge – contact Brian if you are interested.



Brian King also has some give-away items.

“Hi Jay, can you let members know I have the following as 'freebies'

Kosovo 28 inch scale yacht complete apart from radio and servos perhaps a £10 donation to club funds?

Vac formed 26 inch fast electric hull and deck - perhaps a £5 donation to club funds?

Contact me on 628156 to view. Brian”

Commodores Challenge 2020

For 2020 Bob Bagshaw has set 3 x separate Commodores Challenges which everybody is welcome to take part. The event will be held during Mannanan 2020 on 27th & 28th June at Silverdale, with practicing taking part on Sunday 31st May at Silverdale.

Bob has provided some rules for each challenge which you are welcome to interpret!

Challenge 1 = RC Time Trial on Silverdale lake

Course = 4 buoys in rough 'T' shape -- buoys 1, 2 & 3 are more or less in line // to bank -- no 4 opposite no 2 to form gate & finishing line. Buoys No's 1 & 3 to be laid about 6 rods, poles or perches apart or 1½ chains, 33 yards or 30 metres - take your pick. Buoys 2 & 4 about 1 fathom apart forming the Timing Gate to be placed between 1 & 3 so that the gate is convenient for visual timing.

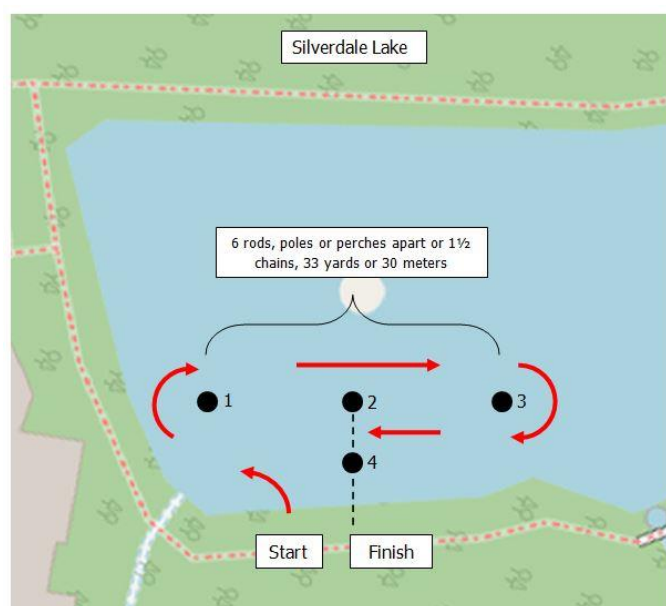
Challenge = boat to start with stern to a designated point on the bank roughly opposite to Buoy 1. Skippers (not necessarily owners) will give the timekeeper an estimated time for their run before starting. On command to start the boat will sail out around the back of buoys 1,2 &3, (NB-on surface) turning round to come back down in front of buoys (submerged if preferred) through the gate - bow crossing line to be timed. Boats then clear course a.s.a.p. WITHOUT crossing "line of start" in order to keep things moving!

Scoring = each second or part thereof either side of the declared time will incur 1 penalty points.

Stopping = aborted try.

Marked alterations in speed = extra 5 points penalty.

Moderate (but NOT exaggerated) zig-zag course on last leg allowed at timekeepers discretion but NO CIRCLING. Every sailable boat should be able to take part and skippers can share boats. Multiple runs should be possible and the worst scores discarded.



Obviously lowest score wins - in event of a tie the fastest time takes the trophy.

Challenge 2 = Tethered Paddle Boats on Small Pool

Paddleboats can be either side-wheeler or sternwheeler.

Hull SKIN up to gunwale except for transom made out of centre cardboard tube ex kitchen paper towel roll.

Hull max about 9"/225mm long.

No restriction on paddle wheel size.

Power source to be electric (brushed motor maximum 3 volts) OR clockwork and should be able to complete at least 3 laps of the pond. Bob has a selection of electric motors with double ended shafts & clockwork motors available for a small £1 donation.

Tether point about 6" apart, triangular tether with quick attaching ring at apex about 12" / 300mm from boat.

Competition = concours d 'elegance - Boats to be voted on for performance and appearance by fellow competitors and possibly spectators.



Challenge 3 = Bamboo Sail Boats on Small Pool

Sail boat to be made using bamboo sundae tray (8" x 4" x 1") as hull. (Please contact Bob Bagshaw to obtain your tray).

Any sail / mast rig allowed - suggested sail material = paper or inside of cereal packet.

Wind power only will be from hand held small fans (or Mother Nature depending on the day).



Competition - as for paddlers.